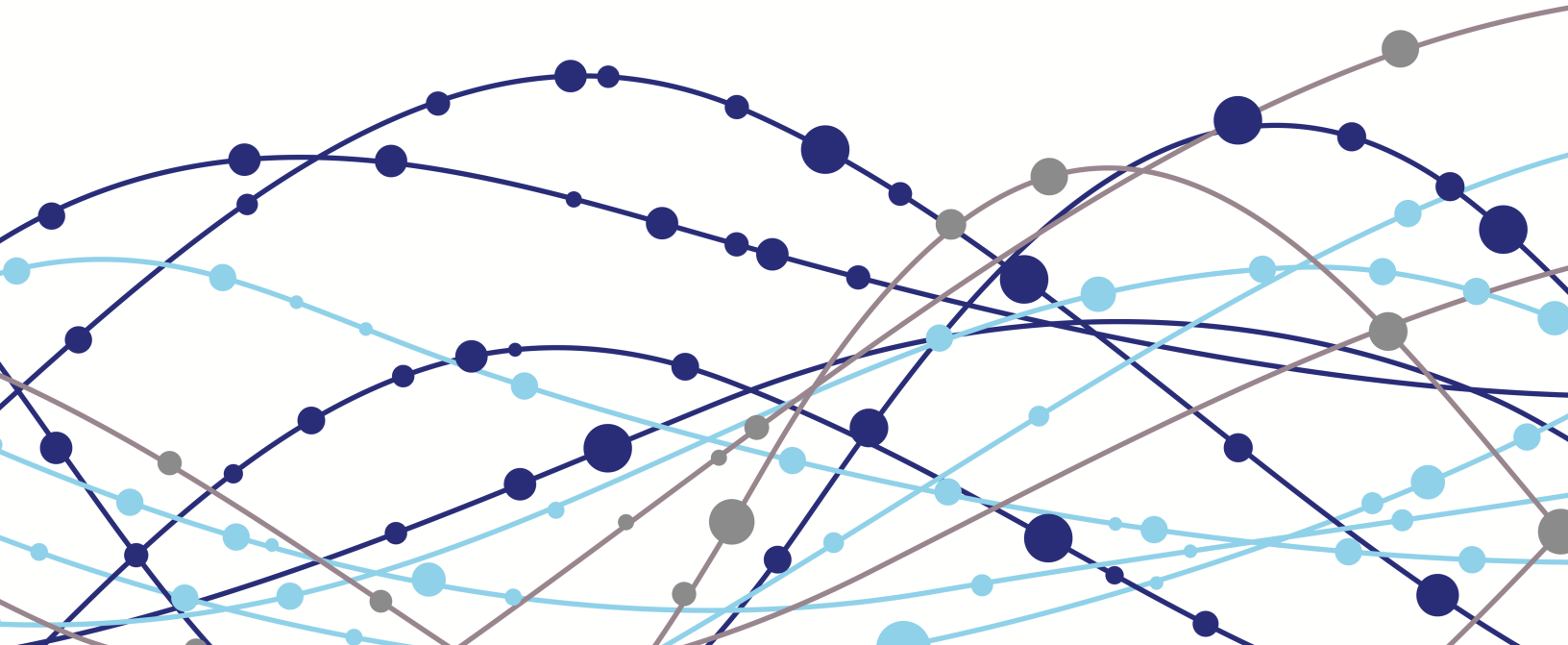


2015 INMED ANNUAL REPORT
2015 - 2016 Academic Year

THE EVIDENCE BEHIND MEDICAL MISSIONS



INMED SERVICE AWARDS

Awards Presented at the 2016 Exploring Medical Missions Conference



Ted & Kim Higgins

2016 Comminellis Award for
Compassionate Service To
Humanity Award Recipients



Tom Kettler

2016 National Healthcare
Service Award Recipient



Richard Randolph

2016 Humanitarian Crisis
Response Award Recipient



Howard Searle

2016 Cross-Cultural Healthcare
Leadership Award Recipient



Scott Kujath

2016 International Medicine
Award Recipient

THE EVIDENCE BEHIND MEDICAL MISSIONS

The 11th annual INMED Exploring Medical Missions Conference



This year's theme was The Evidence Behind Medical Missions. Each year some 5,000 health care teams depart North America, bound for a developing nation. On these journeys, they carry a sincere desire for doing good on behalf of the world's most underserved people. And on return, team members usually bring back accounts of both startling human need and acts of profound kindness. But beyond gestures of compassion, what is the evidence that such service makes a consequential impact on the health of individuals and communities?



Throughout the conference we examined this worthy question from intriguing angles. We also provided opportunities to expand attendee's global health skills, clarified career paths, and connected attendees with sending organizations and like-hearted people. Our hope is that these days have inspired attendee's commitment and fueled a vision for serving our world's most forgotten people.



Nicholas Comminellis, MD, MPH, DIMPH
INMED President & Chief Executive Officer

WE ARE COMMITTED TO THE FORGOTTEN

We are called to serve the neediest, most disadvantaged people of the earth. We seek to relieve their suffering and to assist in making sustainable improvements in their lives. We seek to engage them, to promote their voice, and to offer our hands and feet in service. We respect those in need as active participants, not passive recipients, in this relationship.



NEWS IN 2016

- INMED launched a Free Demo Self-Paced Course to give prospective participants an opportunity to “test drive” features common to all INMED Self-Paced Courses and the online learning section of INMED International Medicine & Public Health Hybrid Courses.
- INMED International Medicine & Public Health Hybrid Courses were held five times, including in-classroom locations in Fort Worth TX, Kansas City MO, Glendale CA, Kirksville MO, and Pittsburgh PA, with 67 total participants.
- INMED also hosted three courses in Helping Babies Breathe and four courses in Ultrasound for Primary Care.
- Nine individuals added an international service-learning experience to their previous International Medicine & Public Health Intensive Hybrid Courses to qualify for the INMED Diploma in either International Public Health or International Medicine & Public Health.

NEWS IN 2016, CONTINUED

- INMED's Continuing Education Department hosted CME joint-providership activities for Saint Luke's Health System, Truman Medical Center, Research Medical Center, Research Belton Medical Center, Children's Mercy Hospital, Lee's Summit Medical Center, and for a number of professional societies.
- The 2016 Exploring Medical Missions Conference theme was *The Evidence Behind Medical Missions*, and included plenary presentation by Gary Morsch, Brad Gautney, and Lani Ackerman. A number of new subjects were added this year, including palliative care, global health education, partnering with national leaders. Approximately 500 individuals participated, including some 200 students.
- INMED received sizable funding from College Park Family Care Center, Ted & Kim Higgins, Hodgdon Family Charitable Foundation, HCA Midwest, and the Butterfield Memorial Foundation, as well as support from 72 individual donors.

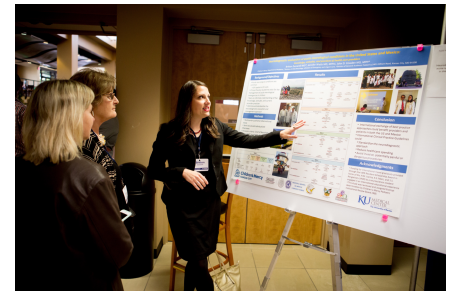
WE VALUE ALL HUMAN LIFE



We regard all individuals as created and loved by God. We respect dignity, uniqueness, diversity and intrinsic worth of all people - regardless of wealth, social status, and or ability to reciprocate our efforts. We encourage these virtues in all of our working relationships, including staff, volunteers, donors, community, and those receiving our support.

2016 EMMC

The INMED Exploring Medical Missions Conferences and Trainings provide intense didactic education in the knowledge and skills necessary to successfully serve the forgotten in poorer communities and across cultures. These conferences are accredited for continuing healthcare education and also provide attendees with opportunities to network with international health leaders and with outstanding service organizations. The 2016 EMMC was attended by approximately 500 individuals.

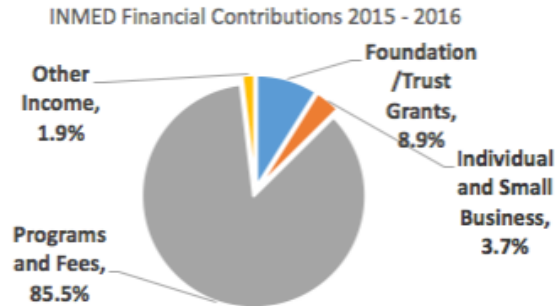


WE ARE STEWARDS

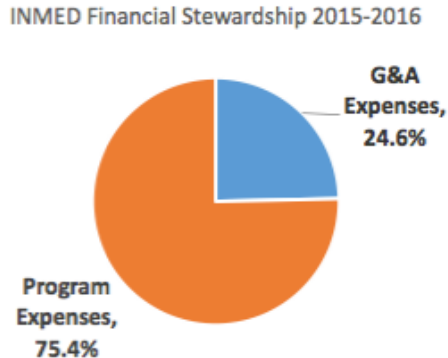
We are stewards. We are managers, not owners, of the resources made available to us on behalf of the forgotten of this world. We are transparent and honest in our communications and relationships with our partners, communities, and governments. Not only are we stewards of resources but of people. We strive to ensure that all of our activities are efficient and effective.



FINANCIAL CONTRIBUTIONS



FINANCIAL STEWARDSHIP



BOARD OF DIRECTORS

PRESIDENT
Nicholas Comminellis,
MD, MPH, DIM&PH
INMED Founder

VICE PRESIDENT
Donald Philgreen, MD

DIRECTOR
Roy Moran, TH.M.

DIRECTOR
Ted Higgins, MD

SECRETARY/TREASURER
Peter Greenspan, DO

DIRECTOR
Mike Searcy, CFP

DIRECTOR
Nancy Crigger, PhD, ARNP

WE ARE PARTNERS



We are partners with those we serve as well as with those who invest into our shared mission. Our relationships are purposeful, diverse, and encourage mutual participation in achieving the mission. We seek cooperation and partnerships with other organizations and groups that share our vision.

CONTRIBUTORS

This includes the following categories: Individual and Small Business Donations, Foundation/Trust Grants, Nonprofit Grants

\$10,000+

Jack Hill Foundation

Kim & Ted Higgins Family
Charitable Fund

Servant Christian Foundation

The College Park Family Care
Centers

\$1,000-9,999

Andrew Moyes
Butterfield Memorial Foundation
Datcha Dorvil
George Faile FOundation
HCA Midamerica Division
Peter Greenspan

\$100 - \$999

Bruce Banwart
Chris Guyer
Collette Fleming
Dean Reeves
Donald and Martha Philgreen
Ekaterina Alberts
Elizabeth Wickstrom
Francie Stoner
Gary Kindell
Glenn Rolf
Glenn Talboy
J Andrew Bukaty
Jesse Roberts
Julie Wood
Karl and Carol Williams
Kevin Dye
Kevin Hubbard
Larry E VanVleet
Lee's Summit Dermatology
Associates, PC
Mark Duff

Martin Kanne
Micah Flint
Michael J. Searcy Trust
Mitch Voelker
Mohammad Ali Khezrian
Nancy Crigger
National Christian Foundation
Phyllis Salanski
Richard Randolph
Robert McCall
Robert Tung
Rory Tompkins
Scott Kujath
Scott Murphy
Stewart & Cecelia Babbott
Uyiosa Aimiuwu
Vincent Waite
William Gilbirds
Winston Manimtim

Institute for International Medicine



Serving the Forgotten since 2003